

**FIXED SERIES 450**  
ANSI/AAMA 101-88

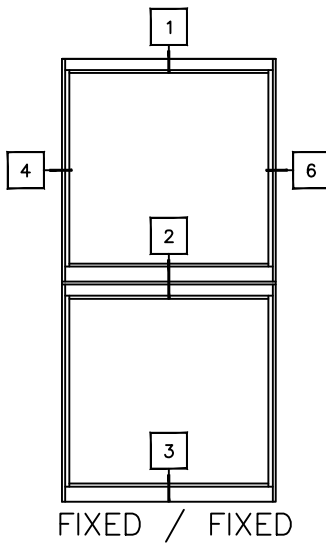
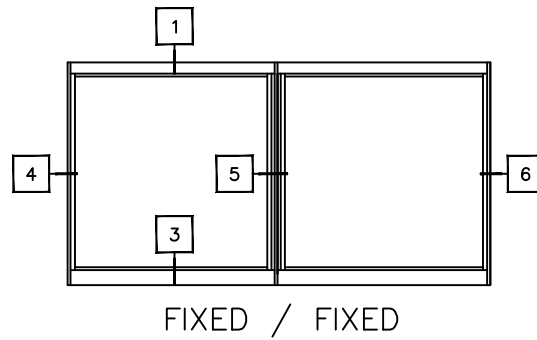
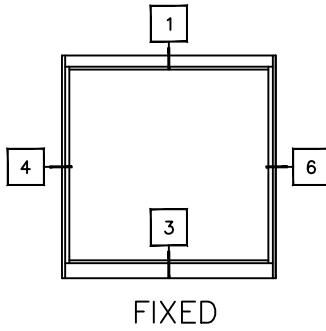
Rating:	F-HC40
Air Infiltration:	0.01 cfm/ft at 6.24 psf
Water Resistance:	No Leakage at 6.00 psf
Structural Performance:	60.0 psf
Thermal Break:	Yes
Main Frame Depth:	2 3/8"
Glazing Thickness:	3/4" - Maximum

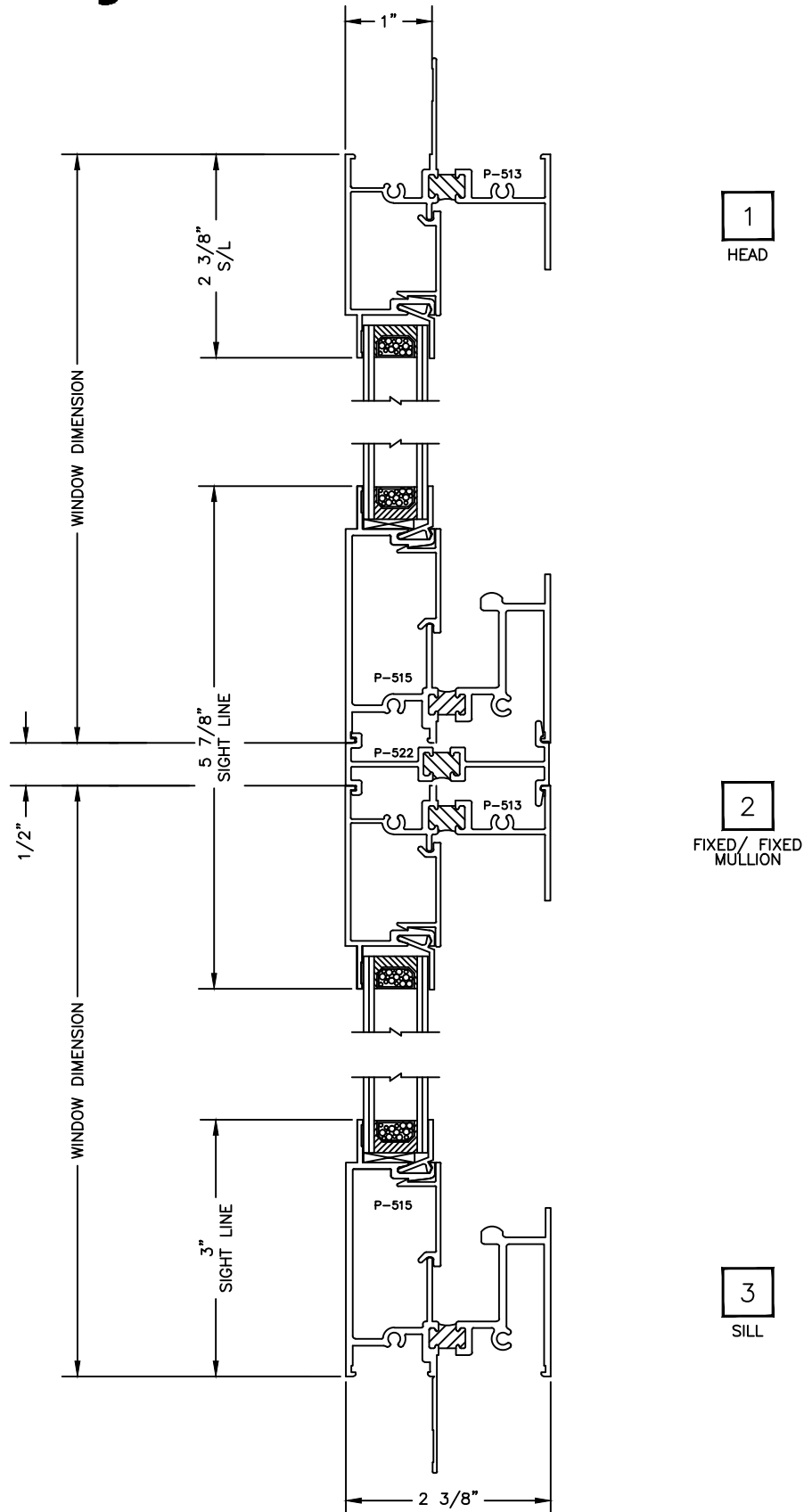
Let's Shine.

800.737.2800 • fax 417.862.1232 • [BoydAluminum.com](http://BoydAluminum.com)

©2011 Boyd Aluminum Manufacturing. The Boyd sunburst and logotype are trademarks of Boyd Aluminum Manufacturing. All rights reserved. Due to continued product research, specifications are subject to change without notice.

**G10-1**  
Boyd 2012



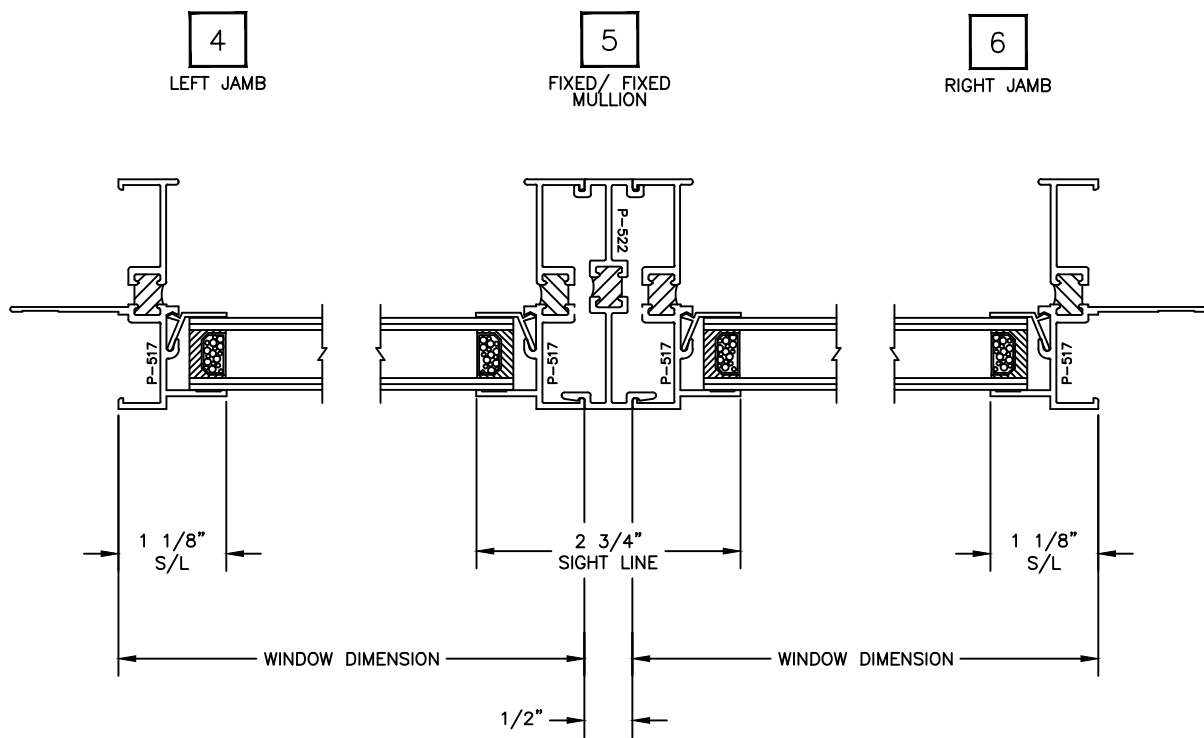


Let's Shine.

800.737.2800 • fax 417.862.1232 • [BoydAluminum.com](http://BoydAluminum.com)

©2011 Boyd Aluminum Manufacturing. The Boyd sunburst and logotype are trademarks of Boyd Aluminum Manufacturing. All rights reserved. Due to continued product research, specifications are subject to change without notice.

**G10-3**  
Boyd 2012



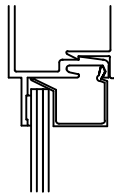
Let's Shine.

800.737.2800 • fax 417.862.1232 • [BoydAluminum.com](http://BoydAluminum.com)

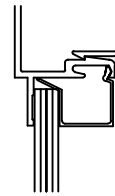
©2011 Boyd Aluminum Manufacturing. The Boyd sunburst and logotype are trademarks of Boyd Aluminum Manufacturing. All rights reserved. Due to continued product research, specifications are subject to change without notice.

**G10-4**  
Boyd 2012

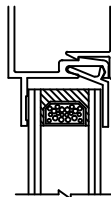
## Glazing Options



1/8" SINGLE GLASS



1/4" SINGLE GLASS



3/4" INSULATED GLASS