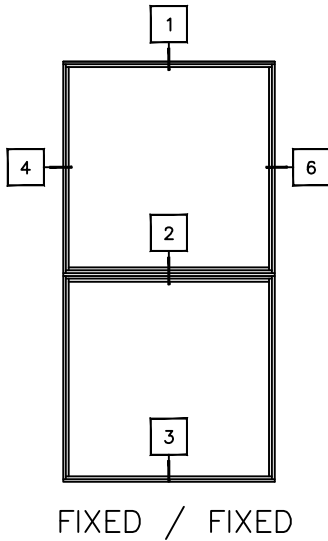
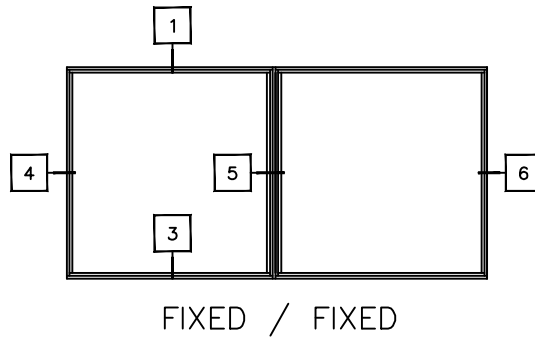
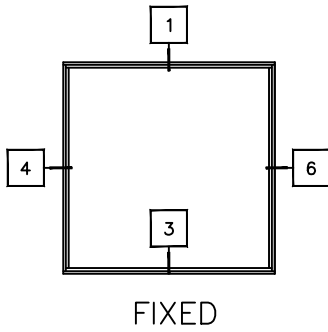


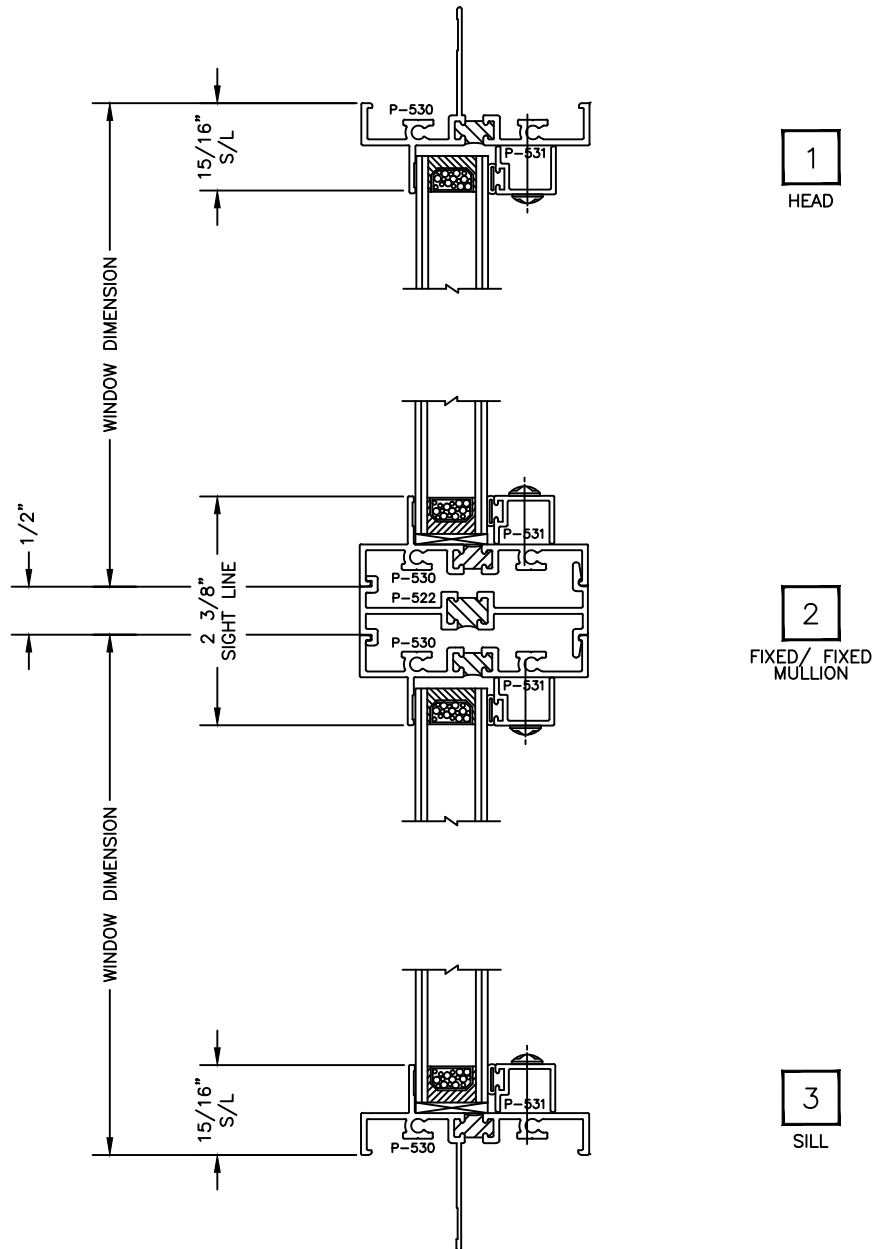
**FIXED SERIES 400**

AAMA/WDMA/CSA 101/I.S.2/A440-05

Rating:	FW-HC70
Air Infiltration:	0.01 cfm/ft at 6.2 psf
Water Resistance:	No Leakage at 12.11 psf
Structural Performance:	105.26 psf
Thermal Break:	Yes
Main Frame Depth:	2 3/8"
Glazing Thickness:	1" - Maximum

Let's Shine.

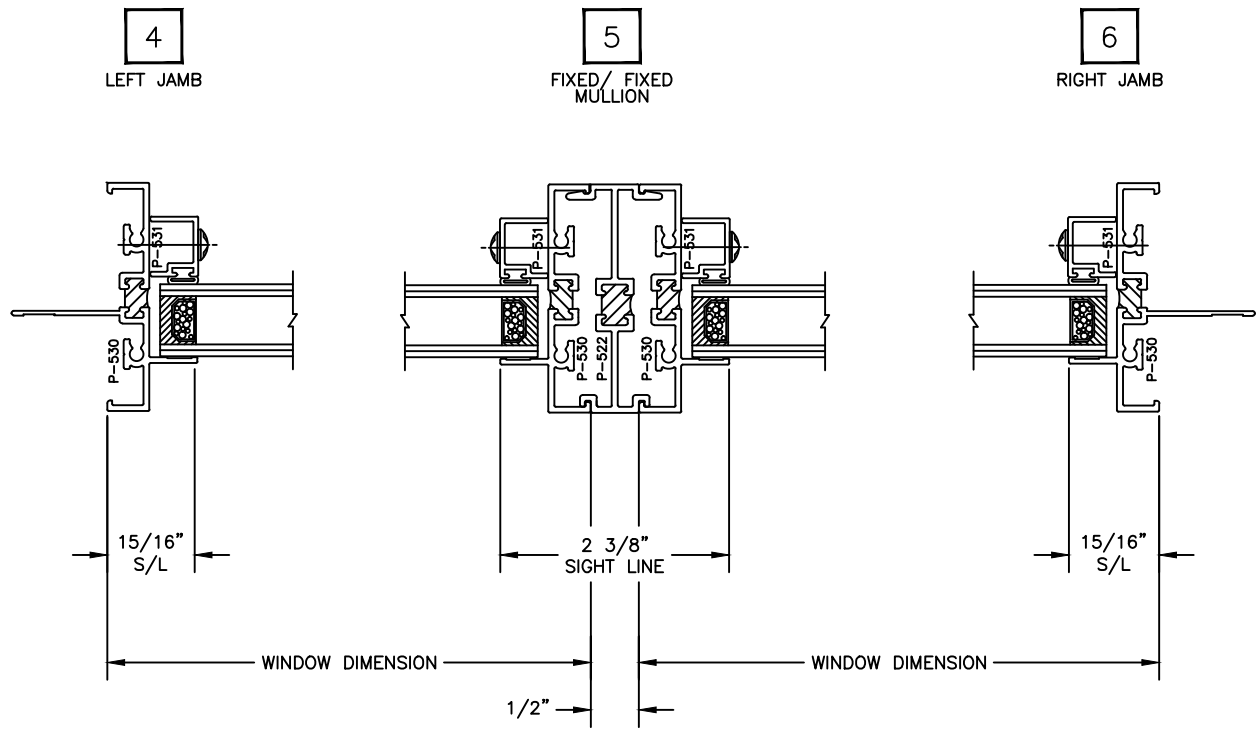




Let's Shine.

800.737.2800 • fax 417.862.1232 • [BoydAluminum.com](http://BoydAluminum.com)

©2011 Boyd Aluminum Manufacturing. The Boyd sunburst and logotype are trademarks of Boyd Aluminum Manufacturing. All rights reserved. Due to continued product research, specifications are subject to change without notice.

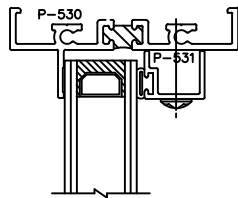


Let's Shine.

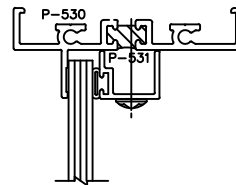
800.737.2800 • fax 417.862.1232 • [BoydAluminum.com](http://BoydAluminum.com)

©2011 Boyd Aluminum Manufacturing. The Boyd sunburst and logotype are trademarks of Boyd Aluminum Manufacturing. All rights reserved. Due to continued product research, specifications are subject to change without notice.

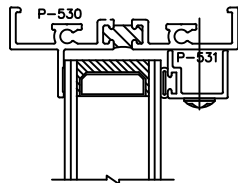
## Glazing Options



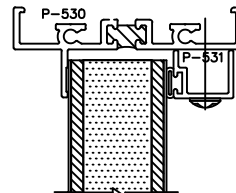
3/4" INSULATED GLASS



1/4" SINGLE GLAZED



1" INSULATED GLASS



1" INSULATED PANEL

Let's Shine.

800.737.2800 • fax 417.862.1232 • [BoydAluminum.com](http://BoydAluminum.com)

©2011 Boyd Aluminum Manufacturing. The Boyd sunburst and logotype are trademarks of Boyd Aluminum Manufacturing. All rights reserved. Due to continued product research, specifications are subject to change without notice.